

Facts

Funding: European Union's Horizon 2020 research programme

Call: Increasing production efficiency and coping with climate change, while ensuring sustainability and resilience

Topic: SFS-29-2017 – Socio-eco-economics – socio-economics in ecological approaches

Grant agreement: No 770747

Project duration: 4 years

(May 2018–April 2022)

Number of involved countries: 12

Number of partners: 17



LIFT Consortium

PARTNERS



COORDINATED BY



Project coordinator

Dr Laure Latruffe, INRAE, Bordeaux, France

Email: laure.latruffe@inrae.fr

Stay LIFTed: www.lift-h2020.eu



lift.h2020



@lift_h2020



lift-h2020

The views expressed on this leaflet are the sole responsibility of the authors and publishers and do not necessarily reflect the views of the European Commission.



Low-Input Farming and Territories

Integrating knowledge for improving ecosystem-based farming

A Horizon 2020 research project

Overall goals

identifying and understanding how socio-economic and policy drivers impact on the development of ecological approaches to farming

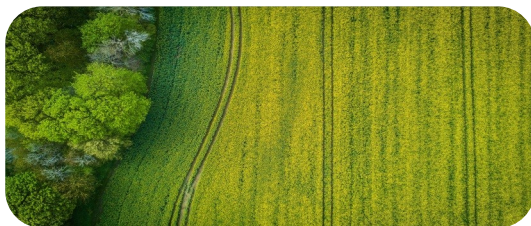
assessing the performance and sustainability of such approaches at various scales

www.lift-h2020.eu

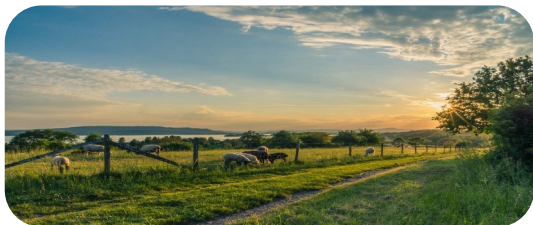


This project has received funding from the European Union's Horizon 2020 research and innovation programme under Grant Agreement No 770747 (LIFT)

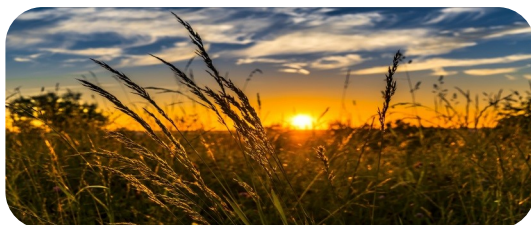
Key activities



LIFT assesses the determinants of adoption of ecological approaches and evaluates their performance and overall sustainability in comparison to more conventional agriculture

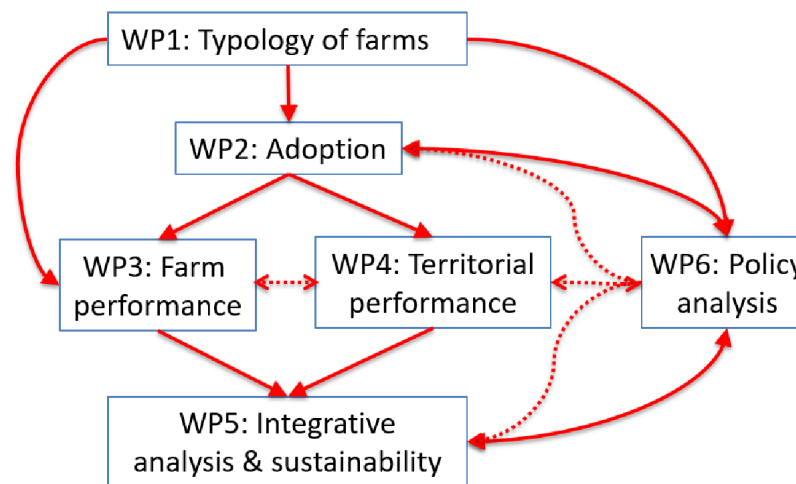


LIFT identifies critical paths toward the adoption of ecological approaches

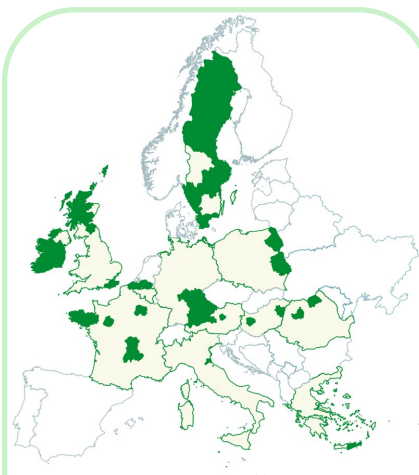


LIFT develops new private arrangements and policy instruments that could improve the adoption of ecological approaches

How?



Red solid lines indicate connections and information transfers among workpackages (WPs); dotted red lines represent loops and feedback.



30 case studies
comprehensive range of farm systems

- **96 stakeholders' workshops**
- **Dedicated surveys:** 1,500 farmers, consumers, etc.
- **Data analysis:** National and EU databases
- **Modelling**
- **Textual analysis, GIS analysis, maps, etc.**



Co-development of **innovative decision-support tools** through integration of transdisciplinary scientific knowledge and stakeholder expertise



LIFT covers the whole spectrum of farming approaches, **from the most conventional to the most ecological**, including everything in between